



PARK VIEW PLAZA

Time Square D-17, D-18
Green Street



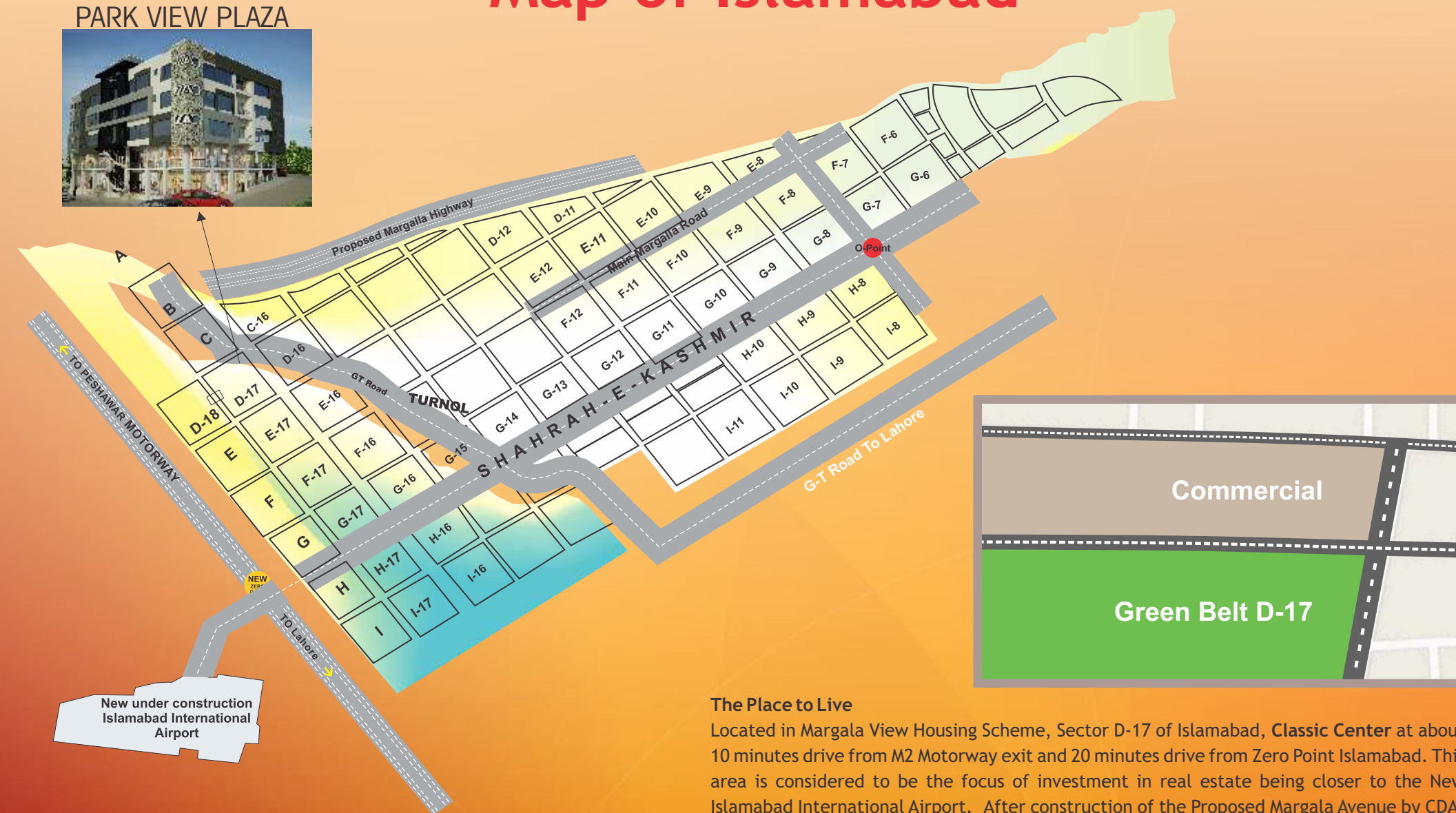
M.S.C. Margalla View Housing Scheme, D-17/2, Islamabad.
Ph: 051-2229797, 2229798, 2229735, Fax: 051-2809509
Mob: 0333-5622693, 0333-5736170
E-mail: builderareliance@gmail.com



Project Designed by:
Architectural Design Solutions
Cell # 0321-5052663, 0333-5147750

Brochure Designed & Printed by
LINEart Designers
0302-8550071 - 2806166

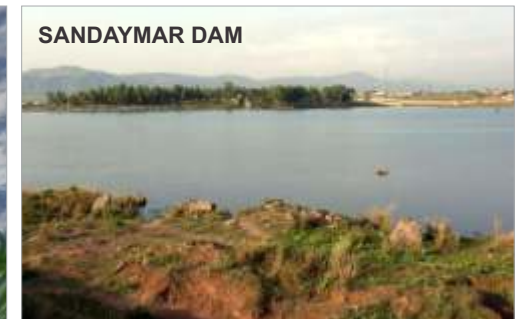
Map of Islamabad



The Place to Live

Located in Margala View Housing Scheme, Sector D-17 of Islamabad, **Classic Center** at about 10 minutes drive from M2 Motorway exit and 20 minutes drive from Zero Point Islamabad. This area is considered to be the focus of investment in real estate being closer to the New Islamabad International Airport. After construction of the Proposed Margala Avenue by CDA, traveling to **Classic Center** would be a breeze. The panoramic beauty of Sunday Mar Lake adds to the tranquility of the area.

Margala View Housing Scheme



Introduction of Margala view

Margala View Housing Scheme, D-17, Islamabad is a part of CDA's initiative of involving private sector to supplement housing stock conforming to the Master Plan of Islamabad and commensurate with the status and standards of development in regular sectors. It is a unique project presenting a wide variety of residential and commercial plots to cater to the lifestyle of the families and people from all walks of life. Development activities are in final stages with Electricity, Gas, Water etc available in the scheme. Construction activities are gathering momentum as more and more families choose Margala View to be their "Home".

"Margala View" provides the ultimate in luxury suburban living at an affordable cost thereby providing an excellent opportunity for home owners as well as investors to take advantage of Capital's phenomenal growth. More than 50% of the total project area is reserved for Parks, open spaces, roads, common facilities and land uses other than residential.

PARK VIEW PLAZA

Time Square D-17, D-18
Green Street



Reliance Builders
Builders, Contractors, Colony Developer & Real Estate Consultants

Project Introduction

Prime aspect of the Project is that the project is situated between D-17 and D-18. We invite you to enter into a realm where lifestyles are redefined; every detail is carefully thought of and incorporated for a more Conductive living experience, spacious & practical.

Main features consist of:

1) Shops & Offices

Around 32 shops are situated in basement & 29 shops are available on ground floor, and on first floor 33 beautiful offices are located.

Easy access, inflow movement, practically planned, well lit & spacious.

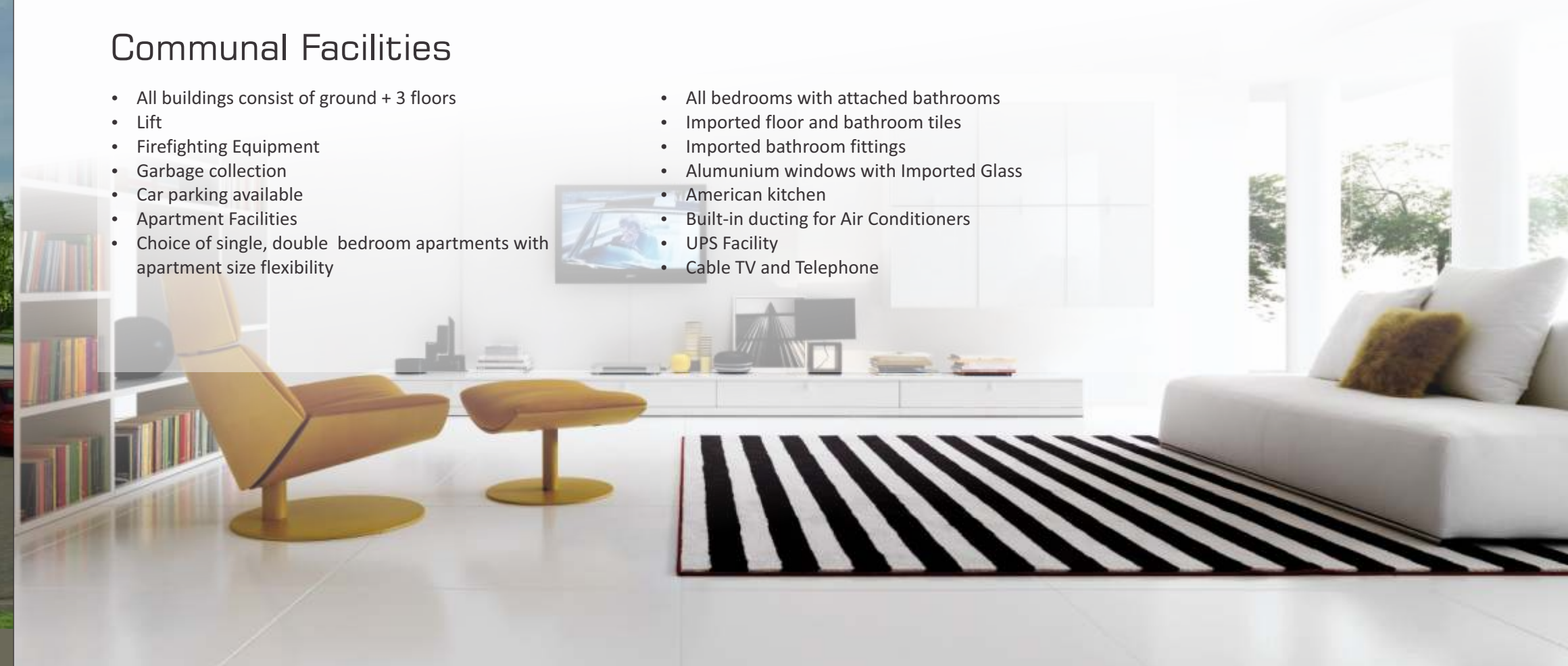
2) Apartments

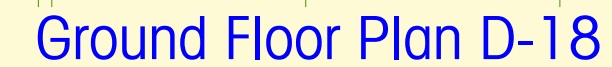
Come and live in elegant apartments, while enjoying the comforts of a life. A distinctive home with simple but practical planning, two bedrooms separately attach bath; you can see and enjoy beautiful view from your windows. Spacious living room with kitchen.

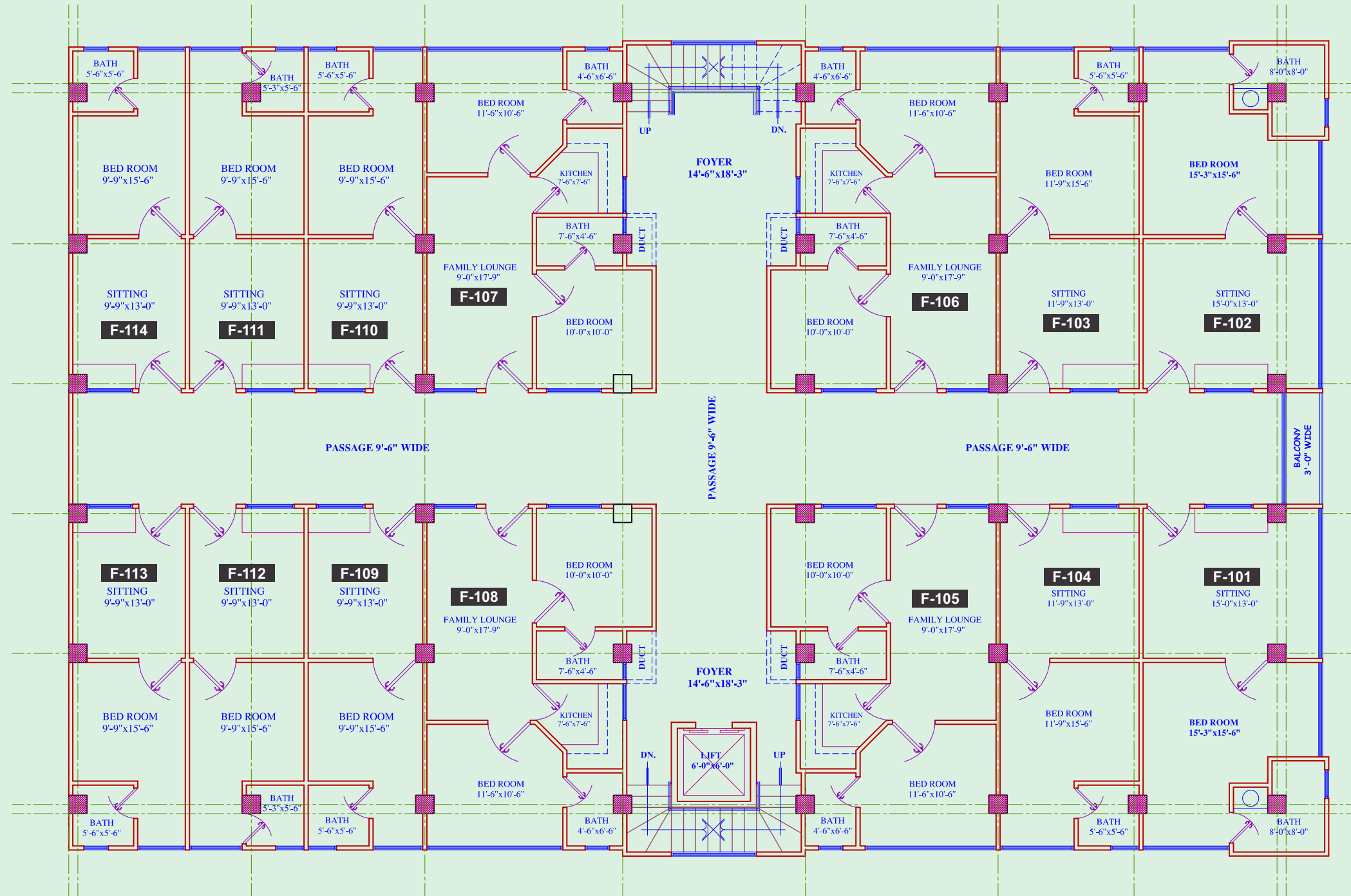
A home that befits today's effervescent lifestyle trends. Where quality comfortable And very affordable to buy you own home.

Communal Facilities

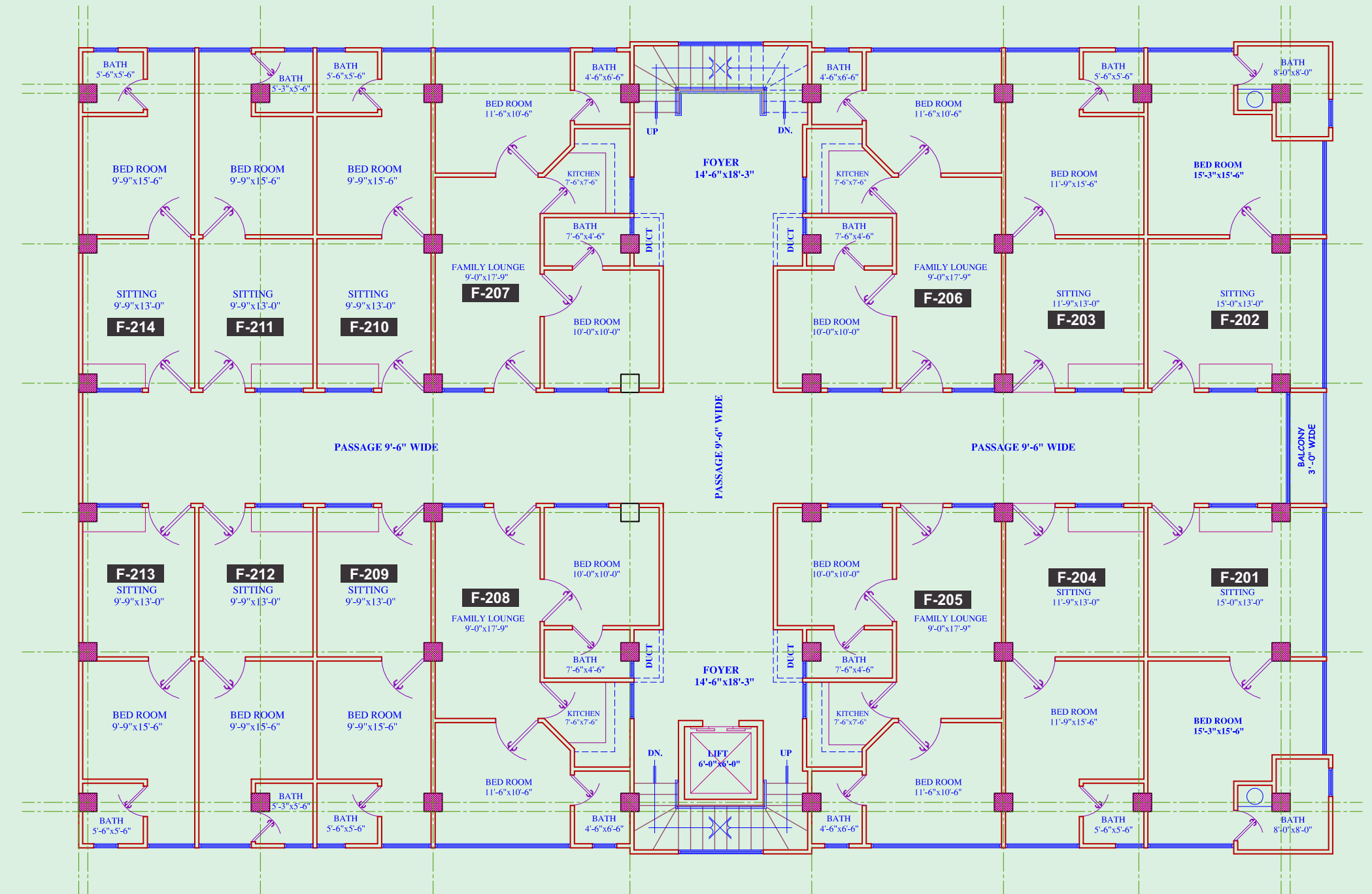
- All buildings consist of ground + 3 floors
- Lift
- Firefighting Equipment
- Garbage collection
- Car parking available
- Apartment Facilities
- Choice of single, double bedroom apartments with apartment size flexibility
- All bedrooms with attached bathrooms
- Imported floor and bathroom tiles
- Imported bathroom fittings
- Alumunium windows with Imported Glass
- American kitchen
- Built-in ducting for Air Conditioners
- UPS Facility
- Cable TV and Telephone







First Floor Plan



Second & Third Floor Plan



Reliance Builders

Builders, Contractors, Colony Developer & Real Estate Consultants



PARK VIEW PLAZA

Time Square D-17, D-18
Green Street