



A Project of



**Reliance Builders**

Builders, Contractors, Colony Developer & Real Estate Consultants

M.S.C. Margalla View Housing Scheme, D-17/2, Islamabad.

Ph: 051-2229797, 2229798, 2229907, Fax: 051-2809509

Mob: 0333-5622693, 0333-5736170

E-mail: mail@reliancebuilder.com

[www.reliancebuilder.com](http://www.reliancebuilder.com)



PROJECT DESIGN BY:  
ARCHITECTURAL DESIGN SOLUTIONS  
CELL # 0321 5052663, 0333 5147750



BROCHURE  
DESIGN & PRINTED BY  
0302-8550071 - 2806166



A Project of



Builders, Contractors, Colony Developer & Real Estate Consultants

[www.reliancebuilder.com](http://www.reliancebuilder.com)





Margala View Housing Scheme (MVHS)

## D-17 ISLAMABAD

Located at Margala View Housing Scheme (MVHS), Sector D-17 of Islamabad, City Center is about 10 minutes drive from G-T Road, Motorway Interchange. This zone is considered to be the focus of investment in real estate being closer to the New Islamabad International Airport and connected with Islamabad & Rawalpindi through G.T Road, Kashmir & Margalla Highways. Specially after the construction of Margala Avenue by CDA, traveling to City Center would be a breeze. In near future MVHS will also be connected to Islamabad/Peshawar Motorway (M-1) via interchange located at a distance of just 2 km. The panoramic beauty of Sanday Mar Lake adjacent to City Center adds to it's tranquility.



## Some of Our Projects in D-17, Islamabad

### PARK VIEW PLAZA



### CLASSIC CENTER



### PARK VIEW PLAZA



## Reliance Builders

**Builders, Contractors, Colony Developer & Real Estate Consultants**

Reliance builder is a well-known name in real estate industry in Islamabad. Our focus was to provide unparalleled quality of service, with honesty and integrity.

Our focus enabled us to achieve a rapid growth rate and by 2007 we became involved in the construction industry - initially building houses for our local and overseas clients.

Who placed their faith in us? As our team grew and our standard of build quality enhanced our reputation, we began to take on larger projects in conjunction with our associates, partners and investors. Today we are a reputable real estate and construction company specializing in residential and commercial projects of varying sizes with many satisfied clients around the world.







## Project Introduction

"City Center is located in the heart of Islamabad in Sector D-17" a project designed to provide all modern facilities in one location and in an affordable minimum price in this period of high inflation. It's really a dream land apartments of which one can only dream to own and of which we are transpiring your dream into reality.

This futuristic project, aims at value added quality of life and real estate in same order of priority, with a very bright future of enhancement of its value manifold.

The launch of City Center marks the beginning of a project focused towards quality construction, and it caters to people of class and aesthetics.



**CITY CENTER**  
CDA Sector D-17, Islamabad







### Communal Facilities

- Security Cameras
- Firefighting Equipment
- Garbage collection
- Close to the shopping center and Mosque



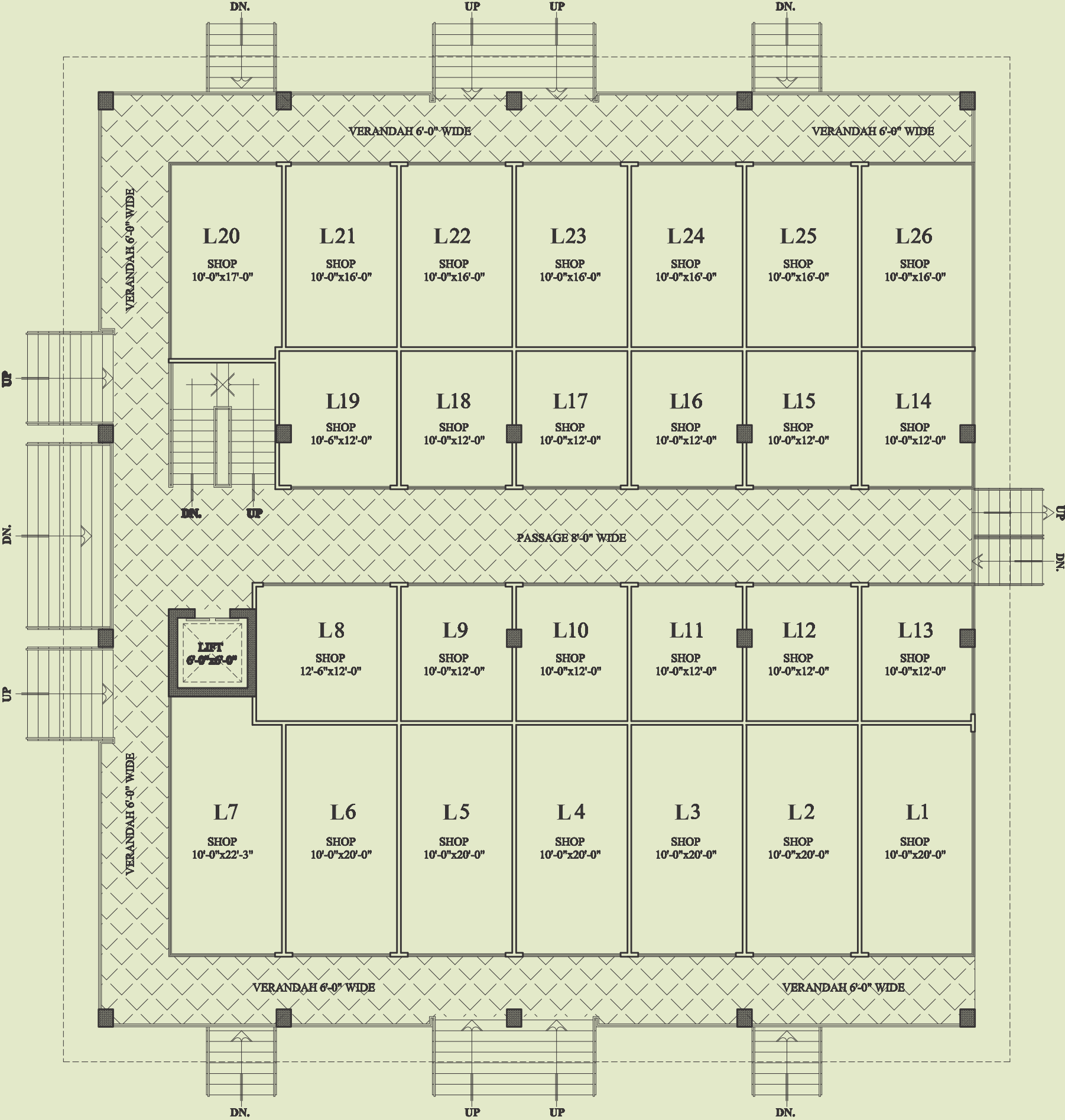
### Apartment Facilities

- One & Two bedroom apartments with apartment size flexibility
- All bedrooms with attached bathrooms
- Imported floor and bathroom tiles
- Imported bathroom fittings
- Aluminum windows
- Kitchen
- Built-in ducting for Air Conditioners
- Cable TV and Telephone
- Lift
- Earthquake resistant

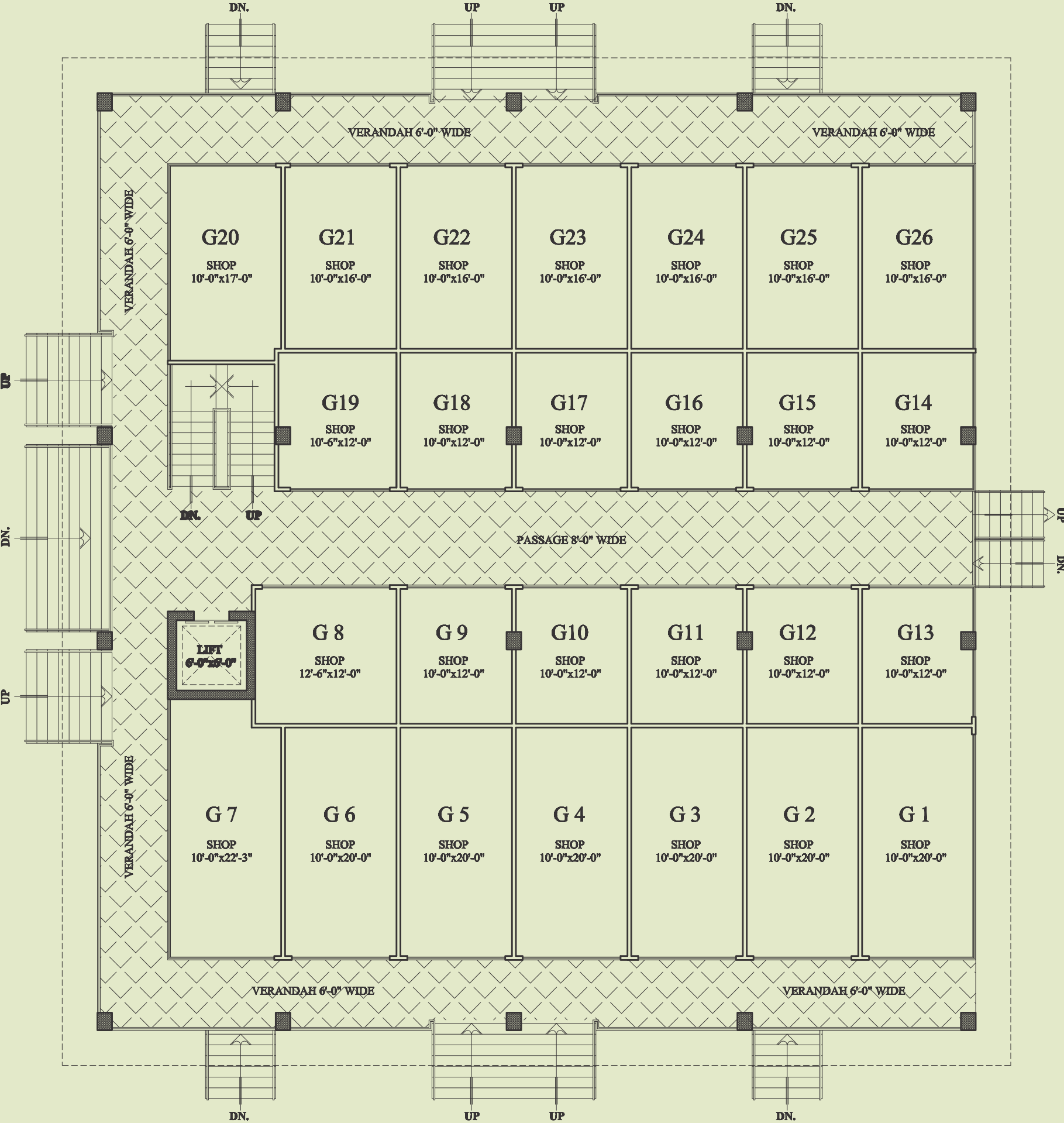




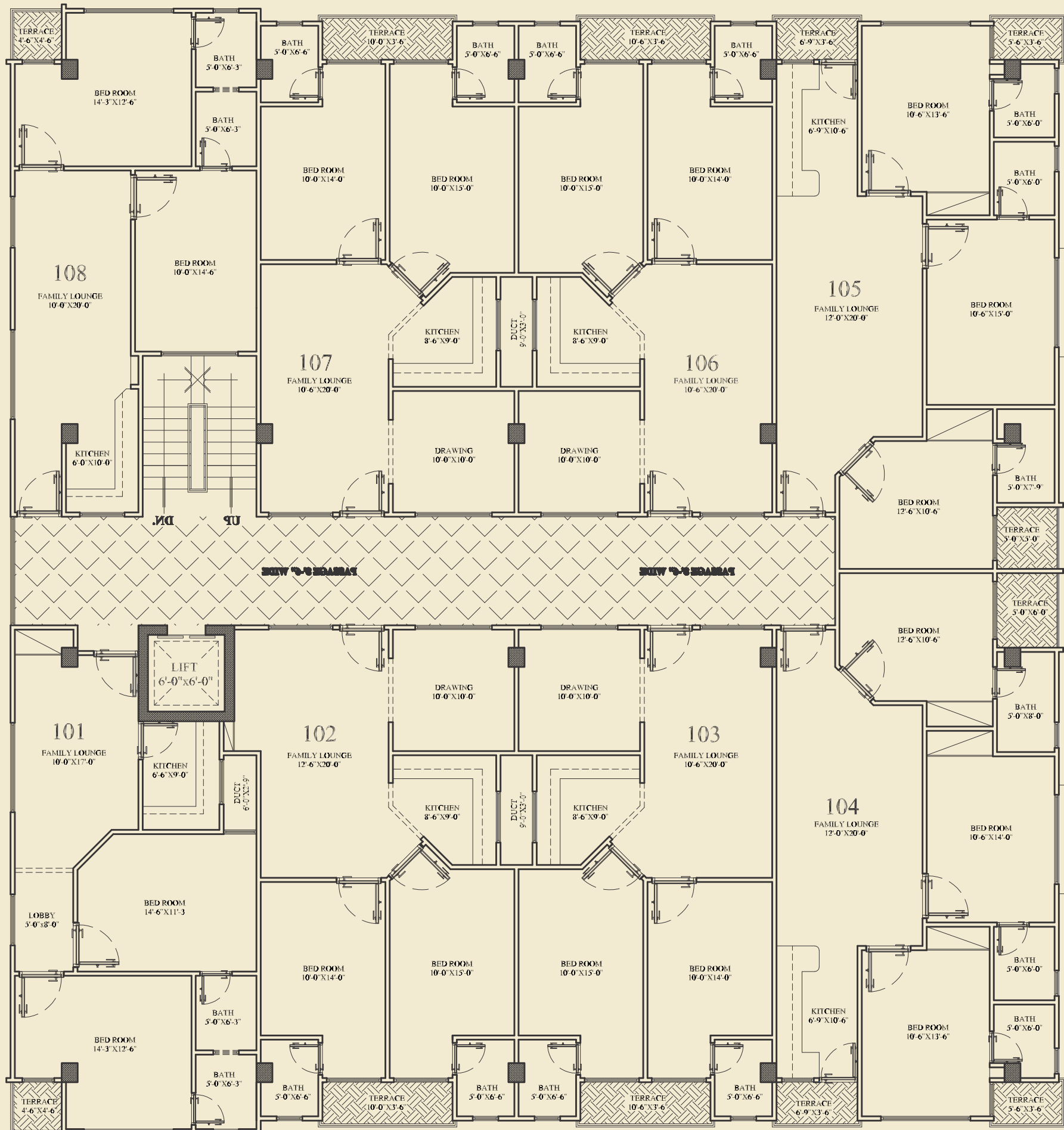
Lower Ground Floor Plan



Ground Floor Plan



First Floor Plan



Second & Third Floor Plan

