



PRIME ARCADE
D-17 ISLAMABAD
| www.reliancebuilder.com |



A Project of



Reliance Builders

Builders, Contractors, Colony Developer & Real Estate Consultants

M.S.C. Margalla View Housing Scheme, D-17/2, Islamabad.

Ph: 051-2229797, 2229798, 2229907, Fax: 051-2809509

Mob: 0333-5622693, 0333-5736170

E-mail: mail@reliancebuilder.com

[facebook.com/reliancebuildersislamabad](https://www.facebook.com/reliancebuildersislamabad)



BROCHURE
DESIGNED & PRINTED BY
0302-8550071 - 051-2806166

PRIME ARCADE
D-17 ISLAMABAD

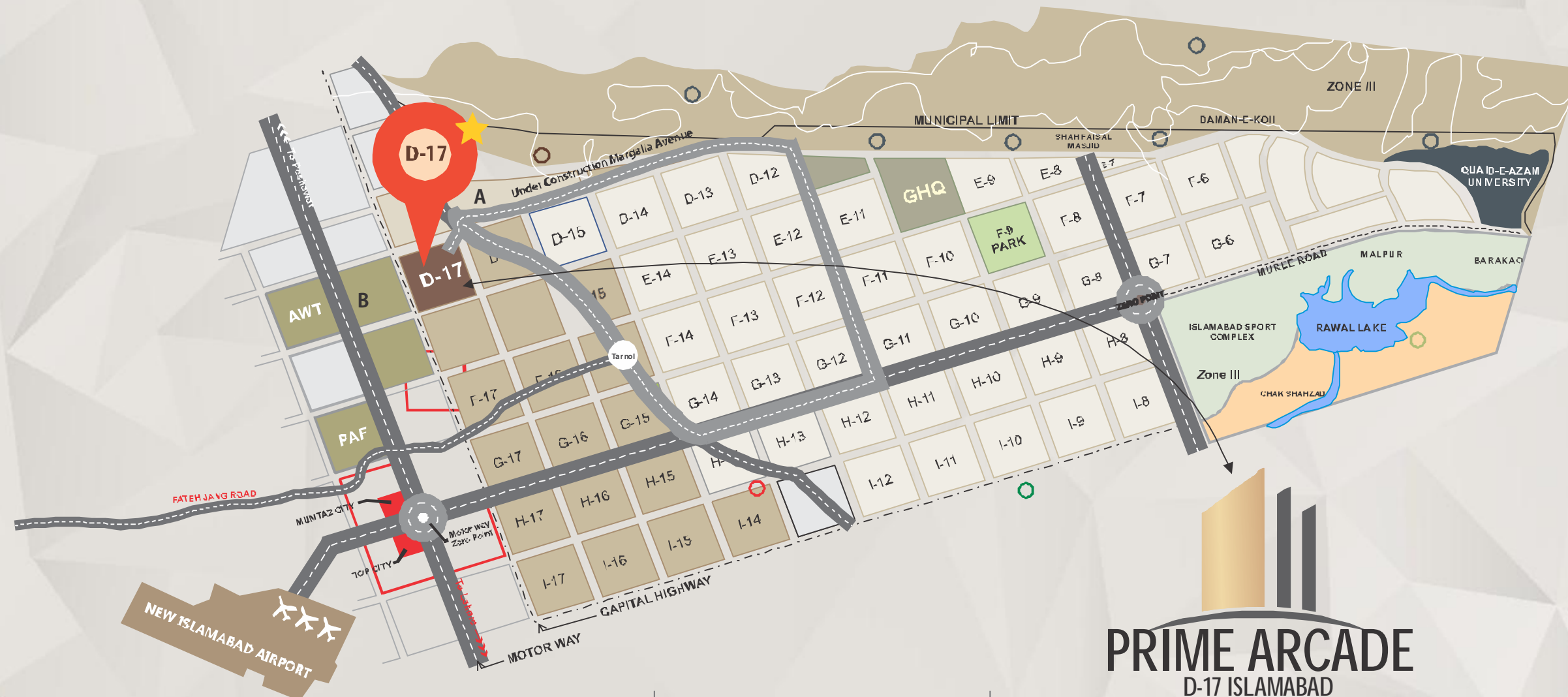
| www.reliancebuilder.com |

A Project of



D-17 Islamabad

Located at Margala View Housing Scheme (MVHS), Sector D-17 of Islamabad, City Center is about 10 minutes drive from G-T Road, Motorway Interchange. This zone is considered to be the focus of investment in real estate being closer to the New Islamabad International Airport and connected with Islamabad & Rawalpindi through G.T Road, Kashmir & Margalla Highways. Specially after the construction of Margala Avenue by CDA, traveling to City Center would be a breeze. In near future MVHS will also be connected to Islamabad/Peshawar Motorway (M-1) via interchange located at a distance of just 2 km. The panoramic beauty of Sanday Mar Lake adjacent to City Center adds to its tranquility.



www.reliancebuilder.com

Reliance Builders

Reliance builder is a well-known name in real estate industry in Islamabad. Our focus was to provide unparalleled quality of service, with honesty and integrity. Our focus enabled us to achieve a rapid growth rate and by 2007 we became involved in the construction industry - initially building houses for our local and overseas clients.

Who placed their faith in us? As our team grew and our standard of build quality enhanced our reputation, we began to take on larger projects in conjunction with our associates, partners and investors. Today we are a reputable real estate and construction company specializing in residential and commercial projects of varying sizes with many satisfied clients around the world.



Some of our Projects in D-17, Islamabad



Park View Plaza



Classic Center

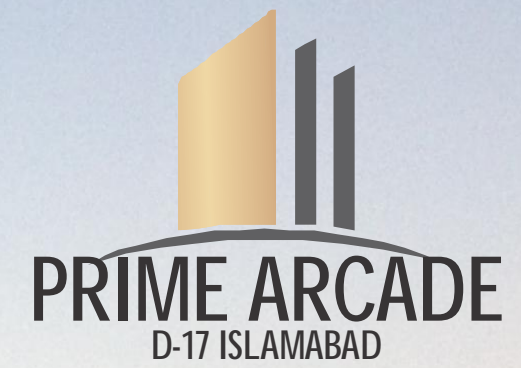


Park View Plaza



City Center 2

www.reliancebuilder.com



A Project of



Reliance Builders
Builders, Contractors, Colony Developer & Real Estate Consultants

Project Introduction

"Prime Arcade is located in the heart of Islamabad in Sector D-1 7" a project designed to provide all modern facilities in one location and in an affordable minimum price in this period of high inflation. It's really a dream land apartments of which one can only dream to own and of which we are transpiring your dream into reality.

This futuristic project, aims at value added quality of life and real estate in same order of priority, with a very bright future of enhancement of its value manifold.

The launch of Prime Arcade marks the beginning of a project focused towards quality construction, and it caters to people of class and aesthetics.

| www.reliancebuilder.com |





1 Bed Luxury Apartments



2 Bed Luxury Apartments



3 Bed Luxury Apartments

Apartment Facilities

- One, Two & Three bedroom apartments
- All bedrooms with attached bathrooms
- Imported floor and bathroom tiles
- Imported bathroom fittings
- Aluminum windows
- Kitchen Built-in ducting for Air Conditioners
- Cable TV and Telephone
- Lift
- Earthquake resistant

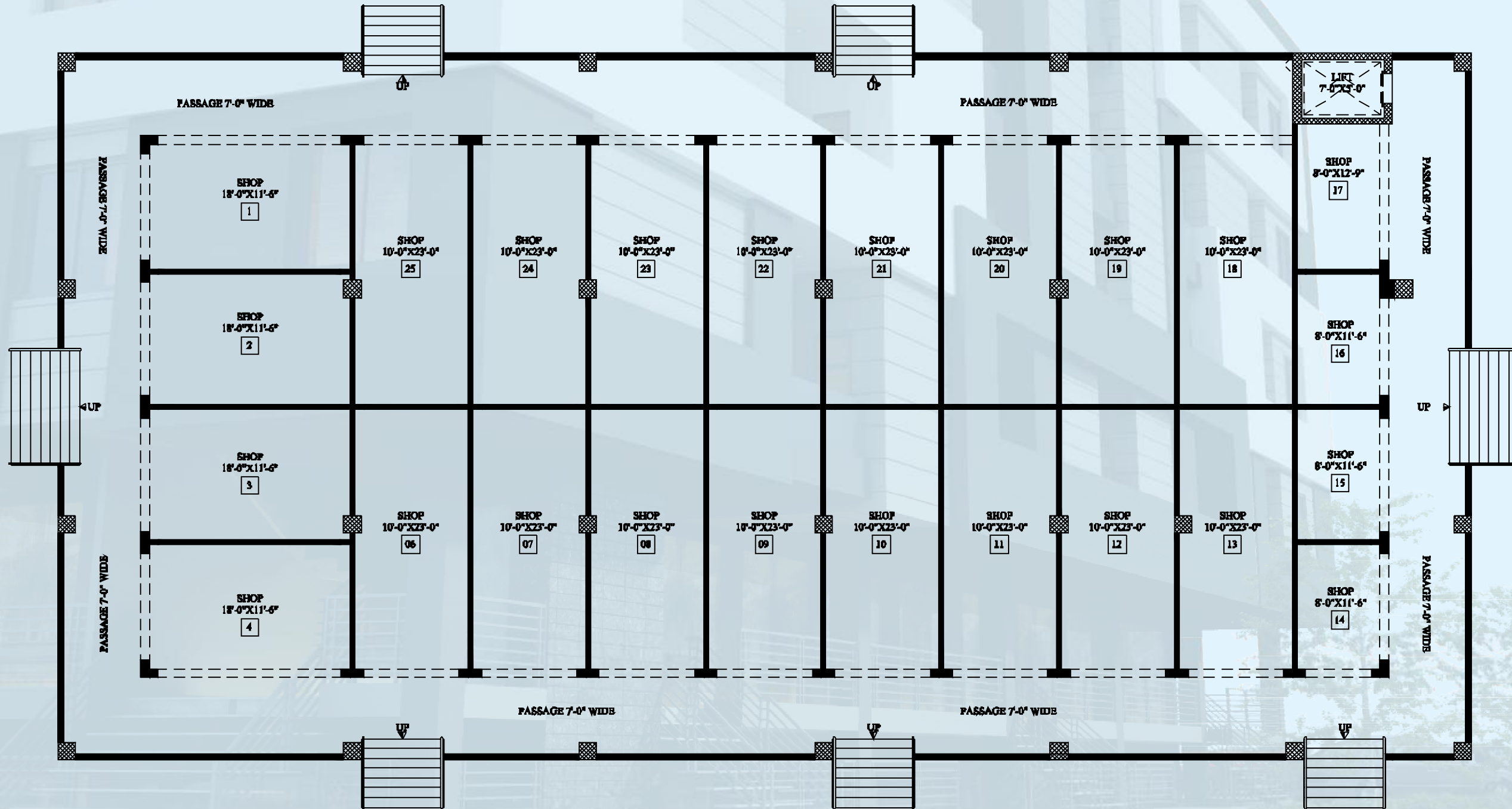
Communal Facilities

- Security Cameras
- Firefighting Equipment
- Garbage Collection
- Close to the shopping center and Mosque

BASEMENT FLOOR PLAN

Covered Area: 7200.00 Sq.ft.

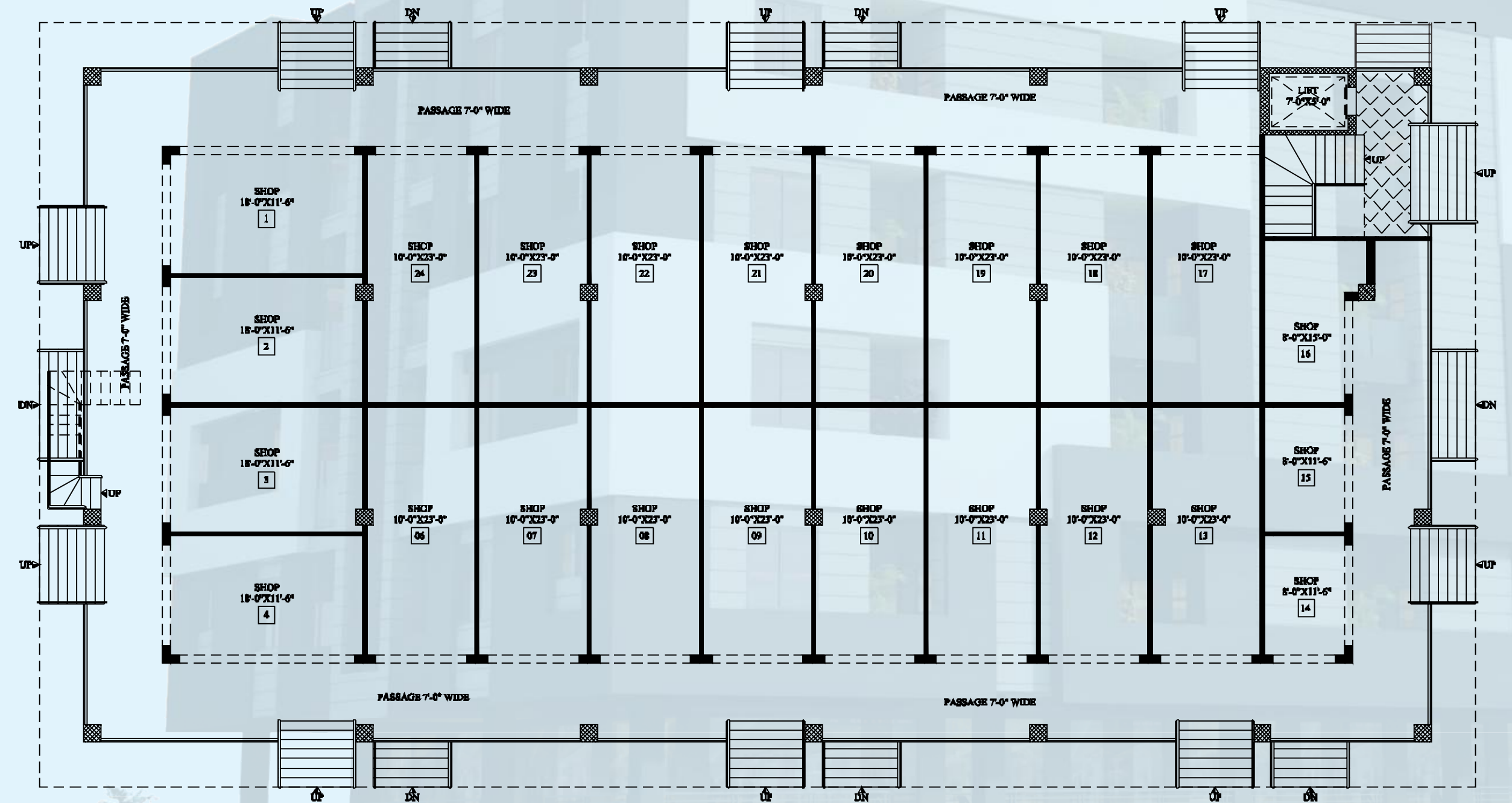
Note: All Dimensions Including Walls



GROUND FLOOR PLAN

Covered Area: 7200.00 Sq.ft.

Note: All Dimensions Including Walls



1st & 2nd FLOOR PLAN

Covered Area: 8704.00 Sq.ft.

Note: All Dimensions Including Walls



3rd & 4th FLOOR PLAN

Covered Area: 8704.00 Sq.ft.

Note: All Dimensions Including Walls





PRIME ARCADE

D-17 ISLAMABAD

www.reliancebuilder.com

A Project of



Reliance BUILDERS
Value built on value

Reliance Builders

Builders, Contractors, Colony Developer & Real Estate Consultants

A Project of



Reliance Builders

Builders, Contractors, Colony Developer & Real Estate Consultants

M.S.C. Margalla View Housing Scheme, D-17/2, Islamabad.

Ph: 051-2229797, 2229798, 2229907, Fax: 051-2809509

Mob: 0333-5622693, 0333-5736170

E-mail: mail@reliancebuilder.com



BROCHURE
DESIGNED & PRINTED BY
0302-8550071 - 051-2806166